
IMGT WP1 & WP8

Phylogenetic analysis of IG and TR genes

Olivier Elemento, olivier@ligm.igh.cnrs.fr

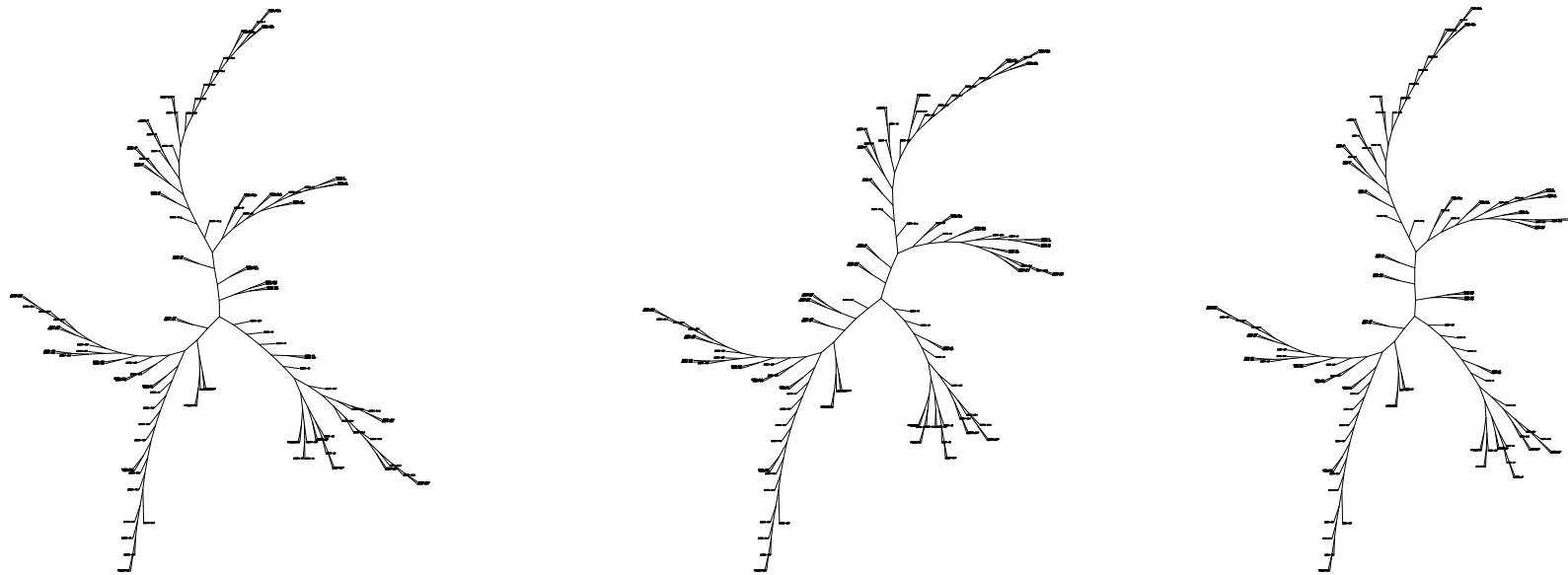
-
- Traditional approach
 - Example : the IGHV locus
 - Online tools for phylogenetic analysis
 - Educational page on phylogenetic analysis
 - Novel approach

Traditional approach

- provide one or several trees for every locus of repeated IG and TR genes
- build trees using the PHYLIP package
- make no assumptions about the duplication process
- use several methods, and provide every different tree

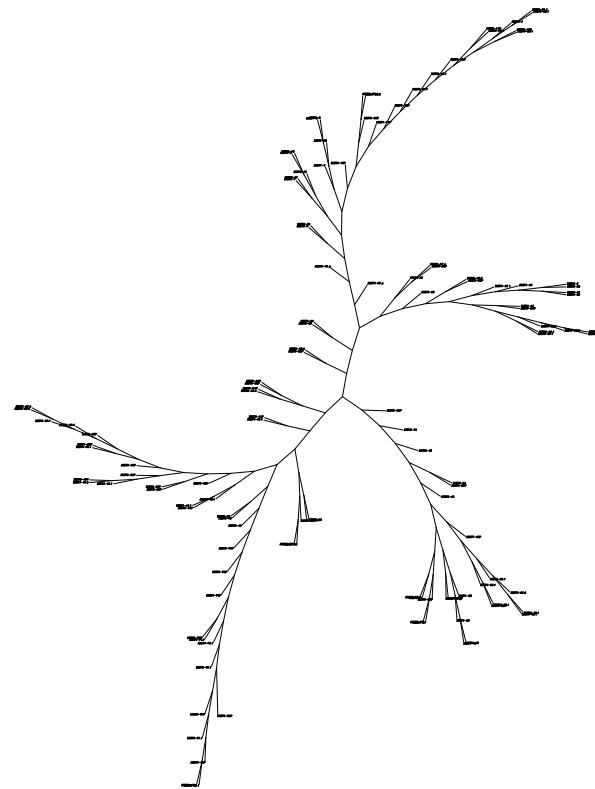
Example : the IGHV locus

Maximum parcimony trees



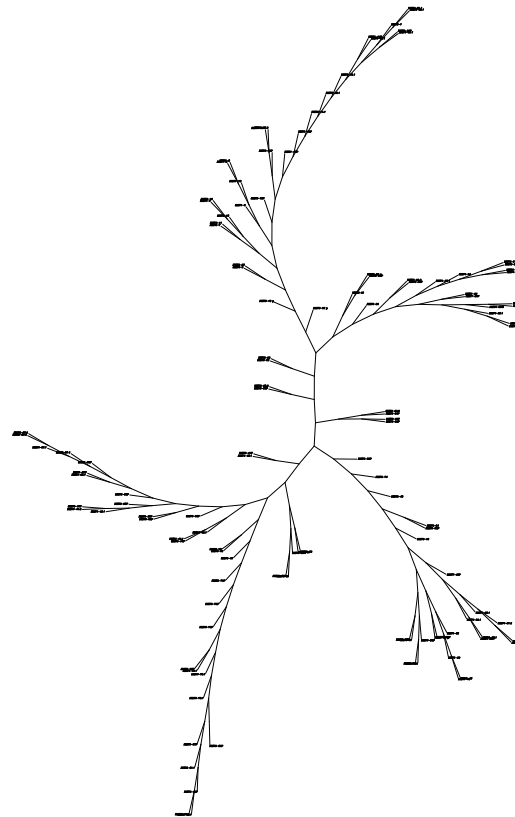
Example : the IGHV locus

Neighbor joining (NJ) tree



Example : the IGHV locus

Maximum likelihood tree



Educational page on phylogenetic analysis

- explain the tree building process
- describe the main methods and their benefits/drawbacks
- describe ways to assess the quality of the reconstruction

Online tools for phylogenetic analysis

- build new trees using different parameters and models of evolution
- add new sequences to existing trees (engineered sequences for example)
- interface PHYLIP programs (EMBOSS/Embassy version)
- output tree representations “on the fly”

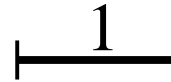
Novel approach

- use a simple model of evolution by tandem duplication

Novel approach

The duplication events

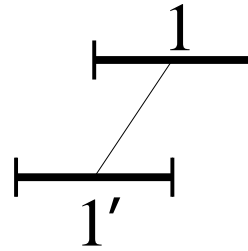
1-duplication



Novel approach

The duplication events

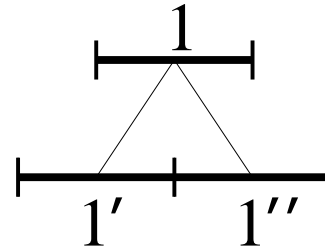
1-duplication



Novel approach

The duplication events

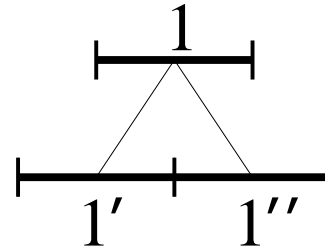
1-duplication



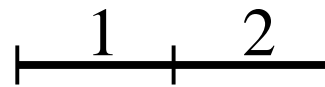
Novel approach

The duplication events

1-duplication



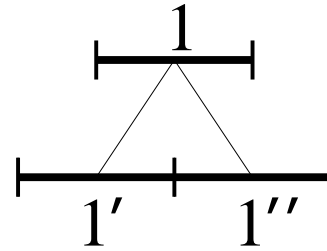
2-duplication



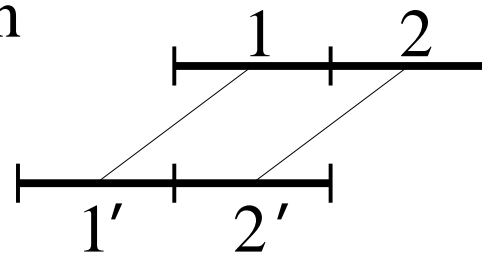
Novel approach

The duplication events

1-duplication



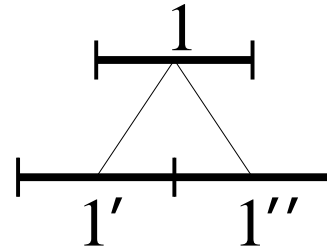
2-duplication



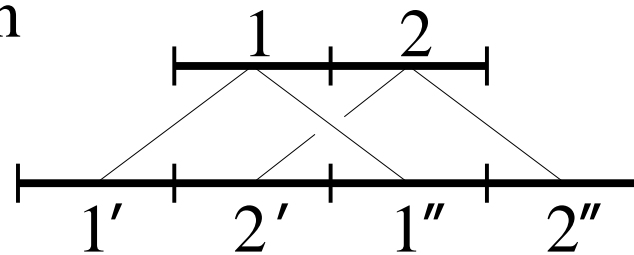
Novel approach

The duplication events

1-duplication



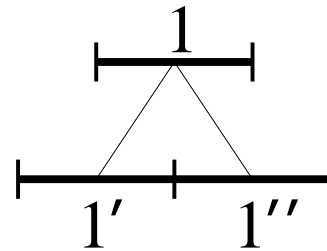
2-duplication



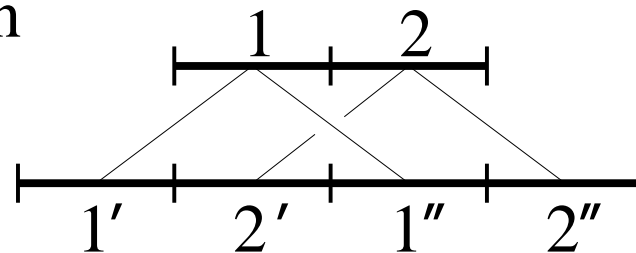
Novel approach

The duplication events

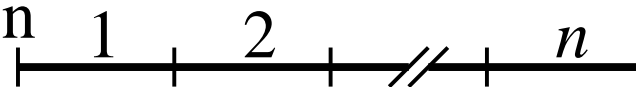
1-duplication



2-duplication



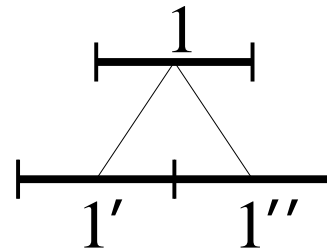
n -duplication



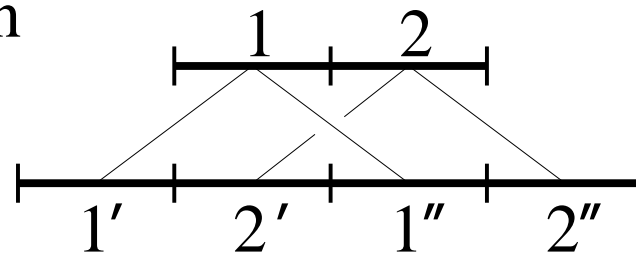
Novel approach

The duplication events

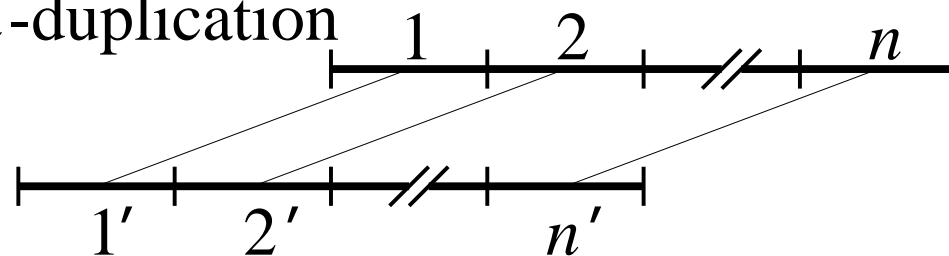
1-duplication



2-duplication



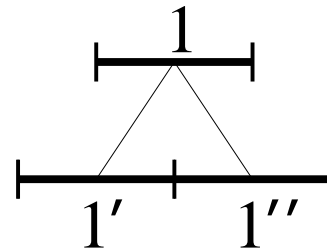
n -duplication



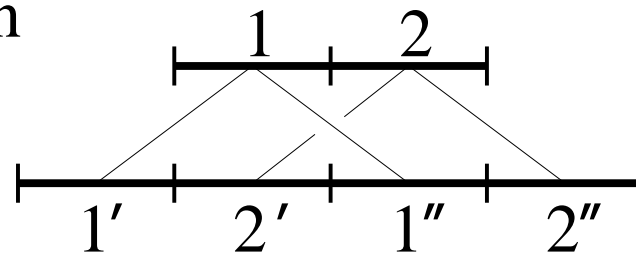
Novel approach

The duplication events

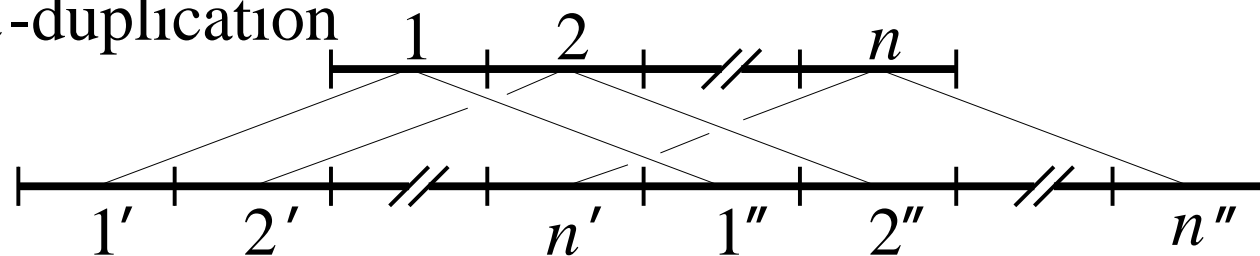
1-duplication



2-duplication



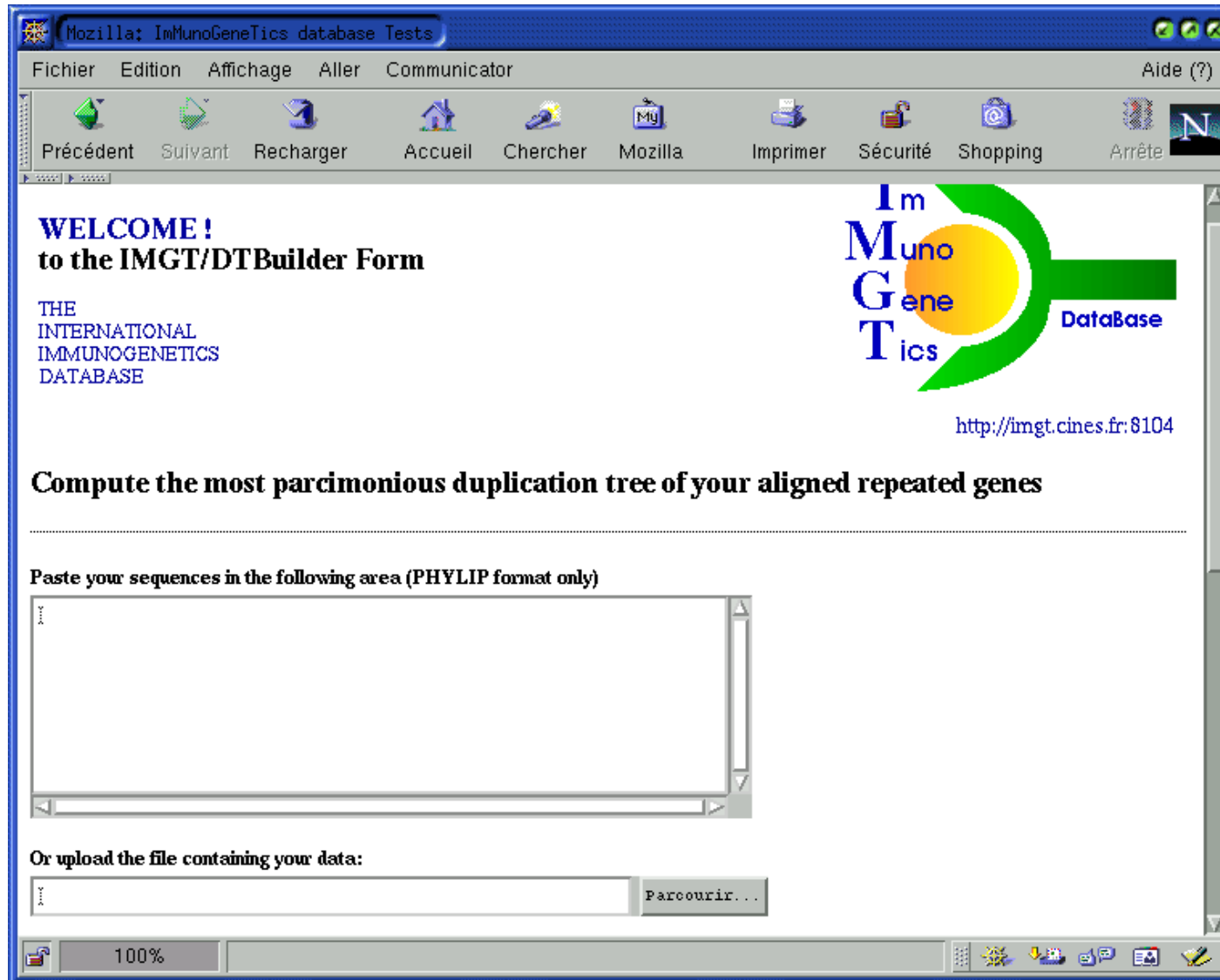
n -duplication



Novel approach

- use a simple model of evolution by tandem duplication
- implement algorithms to derive the optimal duplication trees
- results on some IG and TR locus support the duplication model

Novel approach



Novel approach

